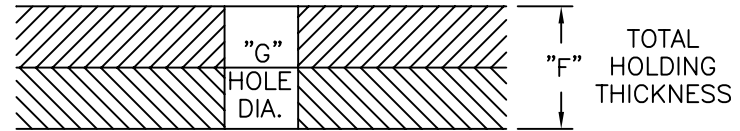
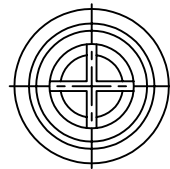
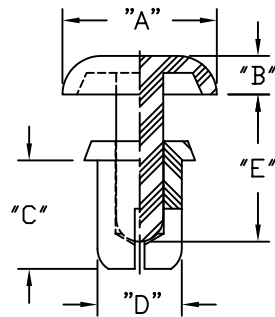
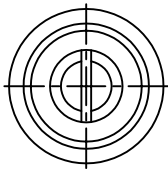
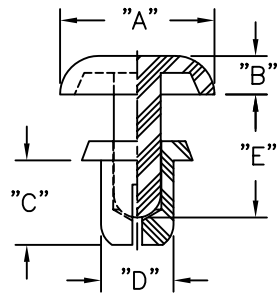


PART NO.	HOLE DIA. "G"	THICKNESS "F"	"A" ±.008(0.2)	"B" ±.008(0.2)	"C" ±.012(0.3)	"D"	"E" ±.012(0.3)	FIG. NO.
SRHR-3035	.122-.126 (3.1-3.2)	.039-.079 (1.0-2.0)	.252 (6.4)	.063 (1.6)	.14 (3.5)	.118 (3.0)	.20 (5.1)	1
SRHR-3045		.079-.118 (2.0-3.0)						
SRHR-3055		.118-.157 (3.0-4.0)						
SRHR-3065		.157-.197 (4.0-5.0)						
SRHR-3080		.197-.256 (5.0-6.5)						
SRHR-3535	.142-.146 (3.6-3.7)	.047-.083 (1.2-2.1)	.315 (8.0)	.071 (1.8)	.18 (4.5)	.138 (3.5)	.20 (5.1)	2
SRHR-3545		.087-.122 (2.2-3.1)						
SRHR-3555		.118-.157 (3.0-4.0)						
SRHR-4050	.161-.165 (4.1-4.2)	.098-.138 (2.5-3.5)	.315 (8.0)	.071 (1.8)	.20 (5.0)	.157 (4.0)	.28 (7.0)	2
SRHR-4060		.138-.177 (3.5-4.5)						
SRHR-4070		.177-.217 (4.5-5.5)						
SRHR-4080		.217-.256 (5.5-6.5)						
SRHR-4100		.295-.335 (7.5-8.5)						
					.22 (5.5)		.24 (6.1)	
					.26 (6.5)		.28 (7.1)	
					.31 (8.0)		.35 (9.0)	
					.14 (3.5)		.20 (5.1)	
					.18 (4.5)		.24 (6.1)	
					.22 (5.5)		.28 (7.1)	
					.24 (6.0)		.28 (7.0)	
					.28 (7.0)		.35 (9.0)	
					.31 (8.0)		.35 (9.0)	
					.39 (10.0)		.43 (11.0)	



- NOTES: FIG. 1
- THE SRHR-3000 SERIES RIVETS ARE RATED UL94HB, THE SRHR-3500 & SRHR-4000 SERIES RIVETS ARE RATED UL94V-2
 - MAT'L: NYLON 4/6 (RMS-56)
COLOR: TAN

FIG. 2

B	SEE ECN #489 FOR CHANGES	SM 10.15.02
A	CHANGED FILE NO. AND TITLE BLOCK	SM 05.18.01
REV	DESCRIPTION	ENGR DATE

TITLE: SNAP-RIVETS, HEAT RESISTANT				DWG IN IN (MM) FINAL			
TOLERANCES UNLESS NOTED .XX=±.010 .XXX=±.015 FRAC=±1/64 ANG=±1°		FILE # SRHR	DWN: P.B.	APP:	PART #		PRINT TYPE
		MAT'L: SEE NOTES	DT: 08-10-94	DT:	SEE TABLE		CA
		RE: RICHCO, INC.	RICHCO INC. PO BOX 804238, CHICAGO, 60680 (773) 539-4060				